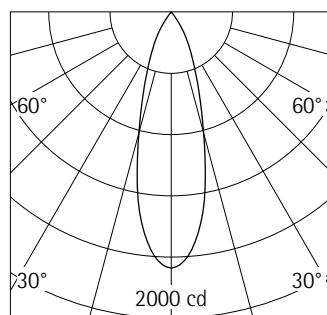


A0010287 White (RAL9002)
LED module: 17.9W 1516lm red, green, blue, warm white
Multi Dim
Version 1
Size M
Darklight lens flood

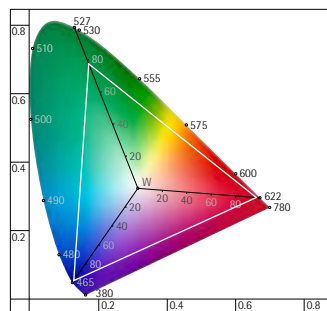
Product description
Housing: cast aluminium, powder-coated; can be swivelled through 270° on the bracket. Upper cover made of polymer.
Bracket: cast aluminium/polymer, coated; can be rotated through 360° on the adapter.
Intrack adapter for ERCO 220-240V track: polymer, white.
ERCO Multi Dim control gear: DALI dimmable, Push Dim, phase dimmable. Controllable via DALI-2 Full Colour (X/Y, TC, RGBWAF).
LED module: high-power LEDs. Color mixer. Collimating lens made of optical polymer.
Lens unit: polymer, white. Darklight lens made of optical polymer. Optical cut-off 40°.
Dimming possible with external dimmers (phase and universal dimmers) or standard push-buttons (Push Dim).
Weight 1.21kg



Beam angle
C₀ 29.0°

Technical data

Luminous flux of the luminaire	--
Connected load	24.2W
Luminaire efficacy	--
Colour deviation	2.0 SDCM
Colour rendition index	--
Lumen maintenance (LED manufacturer specifications)	L90/B10 ≤50000h L80/B50 ≤100000h
LED failure rate	0.1% ≤50000h
Dimming range	0.1%-100%
Dimming method	CCR
LMF	E
Energy efficiency class	--
Standby power per control gear	0.4W
Luminaires per circuit breaker B16	92



Primary colours LED module

Luminous flux Φ (lm)
Dominant wavelength λ (nm)
Colour saturation S(%)

Colour	Φ (lm)	λ (nm)	S(%)
Red	369	620-625	99
Green	410	525-530	77
Blue	166	470-475	97
warm white	571	-	-

Planning data

Cleaning (a)	1				2				3			
Ambient conditions	P	C	N	D	P	C	N	D	P	C	N	D
LMF	0.96	0.94	0.90	0.86	0.93	0.91	0.86	0.81	0.92	0.90	0.84	0.79
RSMF	0.99	0.97	0.95	0.92	0.98	0.97	0.95	0.92	0.98	0.97	0.95	0.92

Hours of operation (h)	1000	5000	10000	20000	30000	40000	50000
LLMF	1.00	0.99	0.98	0.96	0.94	0.92	0.90
LSF	1	1	1	1	1	1	1

MF	LMFxRSMFxLLMFxLSF
MF	Maintenance Factor
LMF	Luminaire Maintenance Factor
RSMF	Room Surface Maintenance Factor
LLMF	Lamp Lumens Maintenance Factor
LSF	Lamp Survival Factor
P	Room pure
C	Room clean
N	Room normal
D	Room dirty

Technical data in accordance with international norms and standards

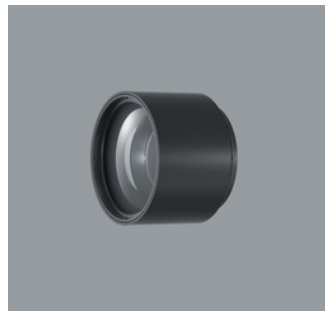
IEC 60598	Luminaires – Part 1+2: general requirements, specific requirements and tests
IEC 62031	LED modules for general lighting – safety requirements
IEC 62471	Photobiological safety of lamps and lamp systems
EN13032-4	Light and lighting – measurement and representation of photometric data
CIE 13	Method of measuring and specifying colour rendering properties of light sources

All technical data is subject to industry-standard tolerances.
Also see www.erco.com/erco-led

Accessories



AC002016
 Lens unit spot
 Polymer, black lacquered, rotatable through 360°. Replacement without tools.
 Darklight lens made of optical polymer.
 Optical cut-off 50°.



AC002015
 Lens unit extra wide flood
 Polymer, black lacquered, rotatable through 360°. Replacement without tools.
 Darklight lens made of optical polymer.



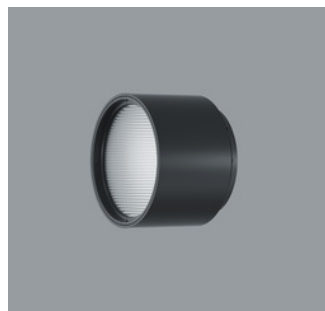
AC002048
 Lens unit spot
 Polymer, white, rotatable through 360°. Replacement without tools.
 Darklight lens made of optical polymer.
 Optical cut-off 50°.



AC002047
 Lens unit extra wide flood
 Polymer, white, rotatable through 360°. Replacement without tools.
 Darklight lens made of optical polymer.



AC002014
 Lens unit flood
 Polymer, black lacquered, rotatable through 360°. Replacement without tools.
 Darklight lens made of optical polymer.
 Optical cut-off 40°.



AC002013
 Lens unit oval flood
 Polymer, black lacquered, rotatable through 360°. Replacement without tools.
 Anti-reflective Spherolit lens made of optical polymer.



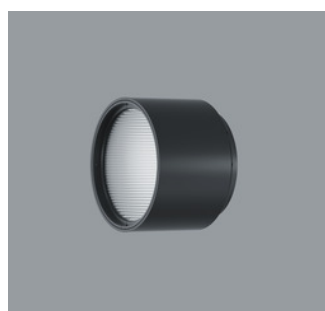
AC002046
 Lens unit flood
 Polymer, white, rotatable through 360°. Replacement without tools.
 Darklight lens made of optical polymer.
 Optical cut-off 40°.



AC002044
 Lens unit oval flood
 Polymer, white, rotatable through 360°. Replacement without tools.
 Anti-reflective Spherolit lens made of optical polymer.



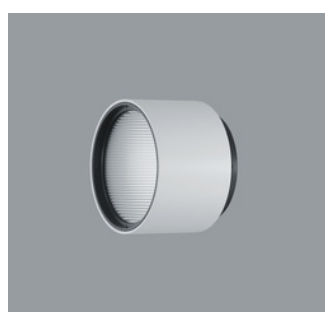
AC002011
 Lens unit wide flood
 Polymer, black lacquered, rotatable through 360°. Replacement without tools.
 Darklight lens made of optical polymer.
 Optical cut-off 40°.



AC002019
 Lens unit oval wide flood
 Polymer, black lacquered, rotatable through 360°. Replacement without tools.
 Anti-reflective Spherolit lens made of optical polymer.



AC002043
 Lens unit wide flood
 Polymer, white, rotatable through 360°. Replacement without tools.
 Darklight lens made of optical polymer.
 Optical cut-off 40°.



AC002051
 Lens unit oval wide flood
 Polymer, white, rotatable through 360°. Replacement without tools.
 Anti-reflective Spherolit lens made of optical polymer.

Accessories

**AC002017**

Lens unit wallwash
Polymer, black lacquered, rotatable through 360°. Replacement without tools.
Anti-reflective Spherolit lens made of optical polymer.

**AC002238**

Lens unit narrow framing
Aluminium/polymer, coated black, pivotable through 360°. Replacement without tools.
Projection lens, continuously focusable.
Framing attachment: stainless steel, black.
Aperture.

**AC002049**

Lens unit wallwash
Polymer, white, rotatable through 360°. Replacement without tools.
Anti-reflective Spherolit lens made of optical polymer.

**AC002240**

Lens unit narrow framing
Aluminium/polymer, coated white, pivotable through 360°. Replacement without tools.
Projection lens, continuously focusable.
Framing attachment: stainless steel, black.
Aperture.

**AC002119**

Lens unit zoom spot
Polymer, black lacquered, rotatable through 360°. Replacement without tools.
Anti-reflective zoom lens made of optical polymer, infinitely variable focus.

**AC002120**

Lens unit wide framing
Aluminium/polymer, coated black, pivotable through 360°. Replacement without tools.
2 projection lenses, continuously focusable. Framing attachment: stainless steel, black.
Aperture.

**AC002130**

Lens unit zoom spot
Polymer, white, rotatable through 360°. Replacement without tools.
Anti-reflective zoom lens made of optical polymer, infinitely variable focus.

**AC002131**

Lens unit wide framing
Aluminium/polymer, coated white, pivotable through 360°. Replacement without tools.
2 projection lenses, continuously focusable. Framing attachment: stainless steel, black.
Aperture.

**AC002121**

Lens unit zoom oval
Polymer, black lacquered, rotatable through 360°. Replacement without tools.
Anti-reflective zoom lens made of optical polymer, infinitely variable focus.

**AC006001**

Softening lens
Filter holder: polymer, black, rotatable through 360°. Replacement without tools.

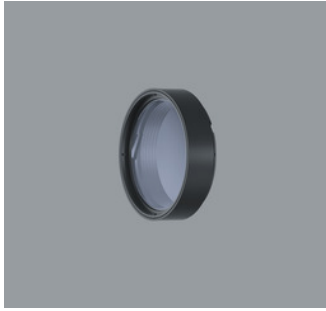
**AC002132**

Lens unit zoom oval
Polymer, white, rotatable through 360°. Replacement without tools.
Anti-reflective zoom lens made of optical polymer, infinitely variable focus.

**AC006026**

Sculpture lens
Filter holder: polymer, black, rotatable through 360°. Replacement without tools.

Accessories

**AC006032**

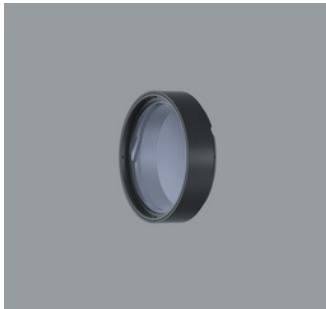
Cold Filter

Filter holder: polymer, black, rotatable through 360°. Replacement without tools.

**AC006033**

Marbled Meat Filter

Filter holder: polymer, black, rotatable through 360°. Replacement without tools.

**AC006030**

Cold Filter Plus

Filter holder: polymer, black, rotatable through 360°. Replacement without tools.

**AC006031**

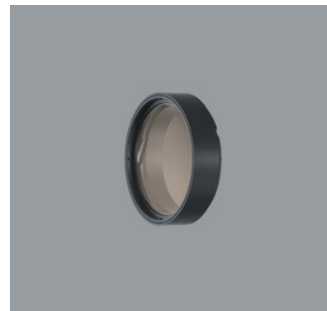
Bread and Pastry Filter

Filter holder: polymer, black, rotatable through 360°. Replacement without tools.

**AC006028**

Warm Filter

Filter holder: polymer, black, rotatable through 360°. Replacement without tools.

**AC006023**

Blue Light Filter

Filter holder: polymer, black, rotatable through 360°. Replacement without tools.

**AC006012**

Warm Filter Plus

Filter holder: polymer, black, rotatable through 360°. Replacement without tools.

**AC001003**

Snoot

Polymer, black, coated white on outside.

**AC006029**

Skintone Filter

Filter holder: polymer, black, rotatable through 360°. Replacement without tools.

**AC001011**

Snoot

Polymer, black.

**AC006011**

Fish Filter

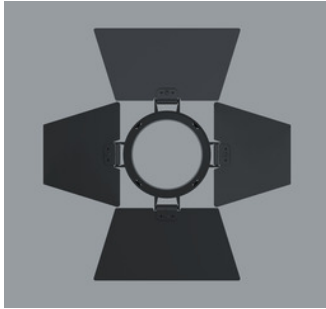
Filter holder: polymer, black, rotatable through 360°. Replacement without tools.

**AC004003**

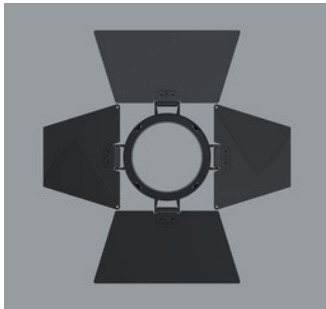
Honeycomb anti-glare screen

Polymer, black.

Accessories



AC005001
Barn doors 4-fold
Aluminium, coated black.



AC005003
Barn doors 8-fold
Aluminium, coated black.



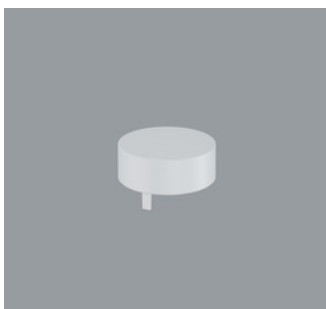
AC003002
Add-on Control Unit On-board Dim
Polymer, black. Replacement without tools.
Rotary control for brightness regulation.



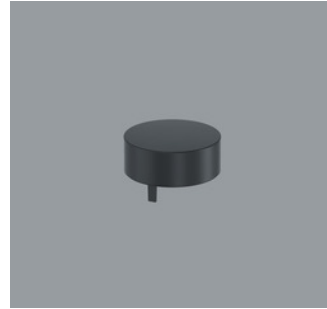
AC003006
Add-on Control Unit On-board Dim
Polymer, white. Replacement without tools.
Rotary control for brightness regulation.



AC003004
Add-on Control Unit Zigbee
Polymer, black. Replacement without tools.
Control via a Zigbee 3.0 compliant hub.



AC003008
Add-on Control Unit Zigbee
Polymer, white. Replacement without tools.
Control via a Zigbee 3.0 compliant hub.



AC003001
Add-on Control Unit Casambi
Bluetooth
Polymer, black. Replacement without tools.
Control via Casambi app (Android/iOS) with Bluetooth Low Energy (BLE)-capable mobile devices or "Casambi Ready" products.



AC003005
Add-on Control Unit Casambi
Bluetooth
Polymer, white. Replacement without tools.
Control via Casambi app (Android/iOS) with Bluetooth Low Energy (BLE)-capable mobile devices or "Casambi Ready" products.