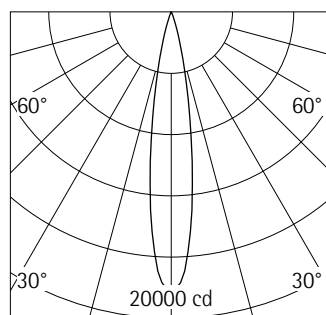
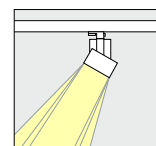
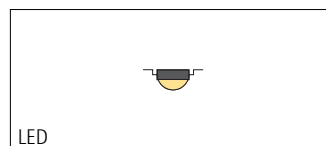
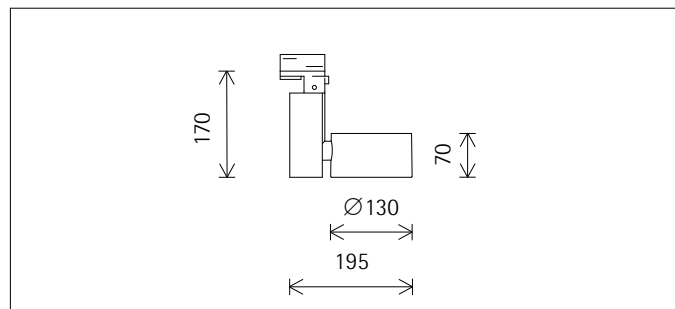




25729.000 White (RAL9002)
LED module: 24W 2380lm 3000K warm white
Phase dimmable+ On-board Dim
Version 5
Spherulitic lens, spot

Product description
Cylindrical light head: cast aluminium, powder-coated. 270° tilt.
Housing: polymer, rotatable on 3-circuit adapter through 360°.
ERCO control gear, dimmable. Rotary control for brightness regulation.
3-phase adapter for ERCO 220-240V track: polymer, white.
LED module: high-power LEDs on metal-core PCB. Collimating lens made of optical polymer.
Protection Class II
Weight 1.08kg



h(m)	E(lx)	D(m)
1	18109	0.30
2	4527	0.60
3	2012	0.90
4	1132	1.20
5	724	1.49

Technical data

Luminous flux of the luminaire	2066lm
Connected load	29.0W
Luminaire efficacy	71lm/W
Colour deviation	1.5 SDCM
Colour rendition index	CRI 97
Lumen maintenance (LED manufacturer specifications)	L90/B10 ≤50000h L90 ≤100000h
LED failure rate	0.1% ≤50000h
Dimming range	1%-100%
Dimming method	CCR_PWM
LMF	E
Energy efficiency class	--
Standby power per control gear	--
Luminaires per circuit breaker B16	112



Mounting

ERCO 3-circuit track
Hi-trac 3-circuit track
1-circuit singlet

For your regional contact in the ERCO
Sales network click here
www.erco.com/contact

© ERCO GmbH 2021

Technical Region: 220-240V 50/60Hz
We reserve the right to make technical
and design changes.
Edition: 12.05.2021
Current version under
www.erco.com/25729.000

Planning data

Cleaning (a)	1				2				3			
Ambient conditions	P	C	N	D	P	C	N	D	P	C	N	D
LMF	0.96	0.94	0.90	0.86	0.93	0.91	0.86	0.81	0.92	0.90	0.84	0.79
RSMF	0.99	0.97	0.95	0.92	0.98	0.97	0.95	0.92	0.98	0.97	0.95	0.92

Hours of operation (h)	1000	5000	10000	20000	30000	40000	50000
LLMF	1.00	0.99	0.98	0.96	0.94	0.92	0.90
LSF	1	1	1	1	1	1	1

MF	LMFxRSMFxLLMFxLSF
MF	Maintenance Factor
LMF	Luminaire Maintenance Factor
RSMF	Room Surface Maintenance Factor
LLMF	Lamp Lumens Maintenance Factor
LSF	Lamp Survival Factor
P	Room pure
C	Room clean
N	Room normal
D	Room dirty

Technical data in accordance with international norms and standards

IEC 60598	Luminaires – Part 1+2: general requirements, specific requirements and tests
IEC 62031	LED modules for general lighting – safety requirements
IEC 62471	Photobiological safety of lamps and lamp systems
EN13032-4	Light and lighting – measurement and representation of photometric data
CIE 13	Method of measuring and specifying colour rendering properties of light sources

All technical data is subject to industry-standard tolerances.
Also see www.erco.com/erco-led

Accessories



70863.000
Spherolit lens spot
made of optical polymer.
Replacement without tools.



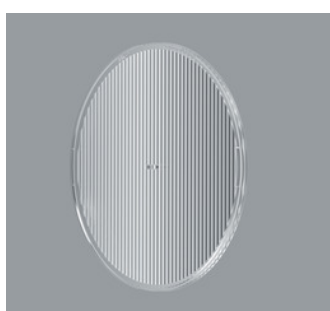
70848.000
Spherolit lens flood
made of optical polymer.
Replacement without tools.



70849.000
Spherolit lens wide flood
made of optical polymer.
Replacement without tools.



73998.000
Spherolit lens extra wide flood
made of optical polymer.
Replacement without tools.



70864.000
Spherolit lens oval flood
made of optical polymer.
Replacement without tools.



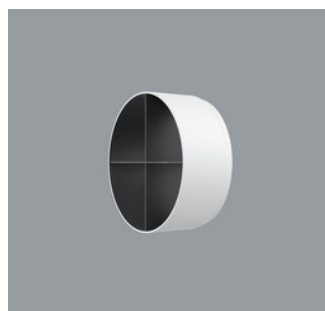
70865.000
Spherolit lens wallwash
made of optical polymer.
Replacement without tools.



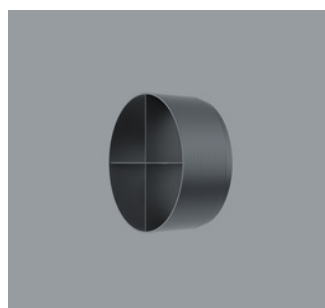
70684.000
Snoot
Polymer.
White



70635.000
Snoot
Polymer.
Black



78037.000
Cross-baffle
Aluminium, coated black, polymer
outer.
White



78041.000
Cross-baffle
Aluminium, coated black, polymer
outer.
Black



78033.000
Honeycomb anti-glare screen
Black